



Test Report

No. : CE/2012/C1042 Date : 2012/12/14 Page : 1 of 10

COULISSE B.V.
VONDERWEG 48 7468 DC ENTER; NETHERLANDS



The following sample(s) was/were submitted and identified by/on behalf of the client as:

Sample Description : COULISSE SCREENS
Sample Receiving Date : 2012/12/07
Testing Period : 2012/12/07 TO 2012/12/14

Test Result(s) : Please refer to next page(s).

Conclusion : Based on the performed tests on submitted samples, the test results of Cadmium, Lead, Mercury and Hexavalent Chromium Cr(VI) comply with the limits as set by RoHS Directive 2011/65/EU Annex II; recasting 2002/95/EC.


Chenyu Kung / Operation Manager
Signed for and on behalf of
SGS TAIWAN LTD.
Chemical Laboratory – Taipei

Unless otherwise stated the results shown in this test report refer only to the sample(s) tested. This test report cannot be reproduced, except in full, without prior written permission of the Company. 除非另有說明，此報告結果僅對測試之樣品負責。本報告未經本公司書面許可，不可部分複製。
This document is issued by the Company subject to its General Conditions of Service printed overleaf, available on request or accessible at www.sgs.com/terms_and_conditions.htm and, for electronic format documents, subject to Terms and Conditions for Electronic Documents at www.sgs.com/en/Terms-and-Conditions/Terms-e-Documents. Attention is drawn to the limitation of liability, indemnification and jurisdiction issues defined therein. Any holder of this document is advised that information contained hereon reflects the Company's findings at the time of its intervention only and within the limits of Client's instructions, if any. The Company's sole responsibility is to its Client and this document does not exonerate parties to a transaction from exercising all their rights and obligations under the transaction documents. This document cannot be reproduced except in full, without prior written approval of the Company. Any unauthorized alteration, forgery or falsification of the content or appearance of this document is unlawful and offenders may be prosecuted to the fullest extent of the law.

Test Report

No. : CE/2012/C1042 Date : 2012/12/14 Page : 2 of 10

COULISSE B.V.
VONDERWEG 48 7468 DC ENTER; NETHERLANDS



Test Result(s)

PART NAME No.1 : WHITE PLASTIC SHEET

Test Item(s)	Unit	Method	MDL	Result	Limit
				No.1	
Cadmium (Cd)	mg/kg	With reference to IEC 62321: 2008 and performed by ICP-AES.	2	n.d.	100
Lead (Pb)	mg/kg	With reference to IEC 62321: 2008 and performed by ICP-AES.	2	n.d.	1000
Mercury (Hg)	mg/kg	With reference to IEC 62321: 2008 and performed by ICP-AES.	2	n.d.	1000
Hexavalent Chromium Cr(VI)	mg/kg	With reference to IEC 62321: 2008 and performed by UV-VIS.	2	n.d.	1000
BBP (Benzyl butyl phthalate) (CAS No.: 85-68-7)	%	With reference to EN 14372. Analysis was performed by GC/MS.	0.003	n.d.	-
DEHP (Di- (2-ethylhexyl) phthalate) (CAS No.: 117-81-7)	%	With reference to EN 14372. Analysis was performed by GC/MS.	0.003	n.d.	-
DIDP (Di-isodecyl phthalate) (CAS No.: 26761-40-0)	%	With reference to EN 14372. Analysis was performed by GC/MS.	0.01	n.d.	-
DINP (Di-isononyl phthalate) (CAS No.: 28553-12-0)	%	With reference to EN 14372. Analysis was performed by GC/MS.	0.01	n.d.	-
DNOP (Di-n-octyl phthalate) (CAS No.: 117-84-0)	%	With reference to EN 14372. Analysis was performed by GC/MS.	0.003	n.d.	-
DBP (Dibutyl phthalate) (CAS No.: 84-74-2)	%	With reference to EN 14372. Analysis was performed by GC/MS.	0.003	n.d.	-
Volatile organic compounds (VOCs)					
1,1,1,2-Tetrachloroethane (CAS No.: 630-20-6)	mg/kg	With reference to US EPA 5021 method. Analysis was performed by GC/MS.	1	n.d.	-
1,1,1-Trichloroethane (CAS No.: 71-55-6)	mg/kg	With reference to US EPA 5021 method. Analysis was performed by GC/MS.	1	n.d.	-
1,1,2,2-Tetrachloroethane (CAS No.: 79-34-5)	mg/kg	With reference to US EPA 5021 method. Analysis was performed by GC/MS.	1	n.d.	-
1,1,2-Trichloroethane (CAS No.: 79-00-5)	mg/kg	With reference to US EPA 5021 method. Analysis was performed by GC/MS.	1	n.d.	-

Unless otherwise stated the results shown in this test report refer only to the sample(s) tested. This test report cannot be reproduced, except in full, without prior written permission of the Company. 除非另有說明，此報告結果僅對測試之樣品負責。本報告未經本公司書面許可，不可部分複製。
This document is issued by the Company subject to its General Conditions of Service printed overleaf, available on request or accessible at www.sgs.com/terms_and_conditions.htm and, for electronic format documents, subject to Terms and Conditions for Electronic Documents at www.sgs.com/en/Terms-and-Conditions/Terms-e-Documents. Attention is drawn to the limitation of liability, indemnification and jurisdiction issues defined therein. Any holder of this document is advised that information contained hereon reflects the Company's findings at the time of its intervention only and within the limits of Client's instructions, if any. The Company's sole responsibility is to its Client and this document does not exonerate parties to a transaction from exercising all their rights and obligations under the transaction documents. This document cannot be reproduced except in full, without prior written approval of the Company. Any unauthorized alteration, forgery or falsification of the content or appearance of this document is unlawful and offenders may be prosecuted to the fullest extent of the law.

Test Report

No. : CE/2012/C1042 Date : 2012/12/14 Page : 3 of 10

COULISSE B.V.
VONDERWEG 48 7468 DC ENTER; NETHERLANDS



Test Item(s)	Unit	Method	MDL	Result	Limit
				No.1	
1,1-Dichloroethene (CAS No.: 75-35-4)	mg/kg	With reference to US EPA 5021 method. Analysis was performed by GC/MS.	1	n.d.	-
1,1-Dichloroethane (CAS No.: 75-34-3)	mg/kg	With reference to US EPA 5021 method. Analysis was performed by GC/MS.	1	n.d.	-
1,1-Dichloropropene (CAS No.: 563-58-6)	mg/kg	With reference to US EPA 5021 method. Analysis was performed by GC/MS.	1	n.d.	-
1,2,3-Trichlorobenzene (CAS No.: 87-61-6)	mg/kg	With reference to US EPA 5021 method. Analysis was performed by GC/MS.	1	n.d.	-
1,2,3-Trichloropropane (CAS No.: 96-18-4)	mg/kg	With reference to US EPA 5021 method. Analysis was performed by GC/MS.	1	n.d.	-
1,2,4-Trichlorobenzene (CAS No.: 120-82-1)	mg/kg	With reference to US EPA 5021 method. Analysis was performed by GC/MS.	1	n.d.	-
1,2,4-Trimethylbenzene (CAS No.: 95-63-6)	mg/kg	With reference to US EPA 5021 method. Analysis was performed by GC/MS.	1	n.d.	-
1,2-Dibromo-3-chloropropane (CAS No.: 96-12-8)	mg/kg	With reference to US EPA 5021 method. Analysis was performed by GC/MS.	1	n.d.	-
1,2-Dibromoethane (CAS No.: 106-93-4)	mg/kg	With reference to US EPA 5021 method. Analysis was performed by GC/MS.	1	n.d.	-
1,2-Dichlorobenzene (CAS No.: 95-50-1)	mg/kg	With reference to US EPA 5021 method. Analysis was performed by GC/MS.	1	n.d.	-
1,2-Dichloroethane (CAS No.: 107-06-2)	mg/kg	With reference to US EPA 5021 method. Analysis was performed by GC/MS.	1	n.d.	-
1,2-Dichloropropane (CAS No.: 78-87-5)	mg/kg	With reference to US EPA 5021 method. Analysis was performed by GC/MS.	1	n.d.	-
1,3,5-Trimethylbenzene (CAS No.: 108-67-8)	mg/kg	With reference to US EPA 5021 method. Analysis was performed by GC/MS.	1	n.d.	-
1,3-Dichlorobenzene (CAS No.: 541-73-1)	mg/kg	With reference to US EPA 5021 method. Analysis was performed by GC/MS.	1	n.d.	-
1,3-Dichloropropane (CAS No.: 142-28-9)	mg/kg	With reference to US EPA 5021 method. Analysis was performed by GC/MS.	1	n.d.	-
1,4-Dichlorobenzene (CAS No.: 106-46-7)	mg/kg	With reference to US EPA 5021 method. Analysis was performed by GC/MS.	1	n.d.	-
2,2-Dichloropropane (CAS No.: 594-20-7)	mg/kg	With reference to US EPA 5021 method. Analysis was performed by GC/MS.	1	n.d.	-

Unless otherwise stated the results shown in this test report refer only to the sample(s) tested. This test report cannot be reproduced, except in full, without prior written permission of the Company. 除非另有說明，此報告結果僅對測試之樣品負責。本報告未經本公司書面許可，不可部分複製。
This document is issued by the Company subject to its General Conditions of Service printed overleaf, available on request or accessible at www.sgs.com/terms_and_conditions.htm and, for electronic format documents, subject to Terms and Conditions for Electronic Documents at www.sgs.com/en/Terms-and-Conditions/Terms-e-Documents. Attention is drawn to the limitation of liability, indemnification and jurisdiction issues defined therein. Any holder of this document is advised that information contained hereon reflects the Company's findings at the time of its intervention only and within the limits of Client's instructions, if any. The Company's sole responsibility is to its Client and this document does not exonerate parties to a transaction from exercising all their rights and obligations under the transaction documents. This document cannot be reproduced except in full, without prior written approval of the Company. Any unauthorized alteration, forgery or falsification of the content or appearance of this document is unlawful and offenders may be prosecuted to the fullest extent of the law.

Test Report

No. : CE/2012/C1042 Date : 2012/12/14 Page : 4 of 10

COULISSE B.V.

VONDERWEG 48 7468 DC ENTER; NETHERLANDS



Test Item(s)	Unit	Method	MDL	Result	Limit
				No.1	
2-Chlorotoluene (CAS No.: 95-49-8)	mg/kg	With reference to US EPA 5021 method. Analysis was performed by GC/MS.	1	n.d.	-
4-Chlorotoluene (CAS No.: 106-43-4)	mg/kg	With reference to US EPA 5021 method. Analysis was performed by GC/MS.	1	n.d.	-
Benzene (CAS No.: 71-43-2)	mg/kg	With reference to US EPA 5021 method. Analysis was performed by GC/MS.	1	n.d.	-
Bromobenzene (CAS No.: 108-86-1)	mg/kg	With reference to US EPA 5021 method. Analysis was performed by GC/MS.	1	n.d.	-
Bromochloromethane (CAS No.: 74-97-5)	mg/kg	With reference to US EPA 5021 method. Analysis was performed by GC/MS.	1	n.d.	-
Bromodichloromethane (CAS No.: 75-27-4)	mg/kg	With reference to US EPA 5021 method. Analysis was performed by GC/MS.	1	n.d.	-
Bromoform (CAS No.: 75-25-2)	mg/kg	With reference to US EPA 5021 method. Analysis was performed by GC/MS.	1	n.d.	-
Bromomethane (CAS No.: 74-83-9)	mg/kg	With reference to US EPA 5021 method. Analysis was performed by GC/MS.	1	n.d.	-
Carbon tetrachloride (CAS No.: 56-23-5)	mg/kg	With reference to US EPA 5021 method. Analysis was performed by GC/MS.	1	n.d.	-
Chlorobenzene (CAS No.: 108-90-7)	mg/kg	With reference to US EPA 5021 method. Analysis was performed by GC/MS.	1	n.d.	-
Chloroethane (CAS No.: 75-00-3)	mg/kg	With reference to US EPA 5021 method. Analysis was performed by GC/MS.	1	n.d.	-
Chloroform (CAS No.: 67-66-3)	mg/kg	With reference to US EPA 5021 method. Analysis was performed by GC/MS.	1	n.d.	-
Chloromethane (CAS No.: 74-87-3)	mg/kg	With reference to US EPA 5021 method. Analysis was performed by GC/MS.	1	n.d.	-
cis-1,2-Dichloroethene (CAS No.: 156-59-2)	mg/kg	With reference to US EPA 5021 method. Analysis was performed by GC/MS.	1	n.d.	-
cis-1,3-Dichloropropene (CAS No.: 10061-01-5)	mg/kg	With reference to US EPA 5021 method. Analysis was performed by GC/MS.	1	n.d.	-
Dibromochloromethane (CAS No.: 124-48-1)	mg/kg	With reference to US EPA 5021 method. Analysis was performed by GC/MS.	1	n.d.	-
Dibromomethane (CAS No.: 74-95-3)	mg/kg	With reference to US EPA 5021 method. Analysis was performed by GC/MS.	1	n.d.	-

Unless otherwise stated the results shown in this test report refer only to the sample(s) tested. This test report cannot be reproduced, except in full, without prior written permission of the Company. 除非另有說明，此報告結果僅對測試之樣品負責。本報告未經本公司書面許可，不可部分複製。
This document is issued by the Company subject to its General Conditions of Service printed overleaf, available on request or accessible at www.sgs.com/terms_and_conditions.htm and, for electronic format documents, subject to Terms and Conditions for Electronic Documents at www.sgs.com/en/Terms-and-Conditions/Terms-e-Document. Attention is drawn to the limitation of liability, indemnification and jurisdiction issues defined therein. Any holder of this document is advised that information contained hereon reflects the Company's findings at the time of its intervention only and within the limits of Client's instructions, if any. The Company's sole responsibility is to its Client and this document does not exonerate parties to a transaction from exercising all their rights and obligations under the transaction documents. This document cannot be reproduced except in full, without prior written approval of the Company. Any unauthorized alteration, forgery or falsification of the content or appearance of this document is unlawful and offenders may be prosecuted to the fullest extent of the law.

Test Report

No. : CE/2012/C1042 Date : 2012/12/14 Page : 5 of 10

COULISSE B.V.
VONDERWEG 48 7468 DC ENTER; NETHERLANDS



Test Item(s)	Unit	Method	MDL	Result	Limit
				No.1	
Dichlorodifluoromethane (CAS No.: 75-71-8)	mg/kg	With reference to US EPA 5021 method. Analysis was performed by GC/MS.	1	n.d.	-
Ethylbenzene (CAS No.: 100-41-4)	mg/kg	With reference to US EPA 5021 method. Analysis was performed by GC/MS.	1	n.d.	-
Hexachlorobutadiene (CAS No.: 87-68-3)	mg/kg	With reference to US EPA 5021 method. Analysis was performed by GC/MS.	1	n.d.	-
Isopropylbenzene (CAS No.: 98-82-8)	mg/kg	With reference to US EPA 5021 method. Analysis was performed by GC/MS.	1	n.d.	-
Methylene Chloride (CAS No.: 75-09-2)	mg/kg	With reference to US EPA 5021 method. Analysis was performed by GC/MS.	1	n.d.	-
Naphthalene (CAS No.: 91-20-3)	mg/kg	With reference to US EPA 5021 method. Analysis was performed by GC/MS.	1	n.d.	-
n-Butylbenzene (CAS No.: 104-51-8)	mg/kg	With reference to US EPA 5021 method. Analysis was performed by GC/MS.	1	n.d.	-
n-Propylbenzene (CAS No.: 103-65-1)	mg/kg	With reference to US EPA 5021 method. Analysis was performed by GC/MS.	1	n.d.	-
o-Xylene (CAS No.: 95-47-6)	mg/kg	With reference to US EPA 5021 method. Analysis was performed by GC/MS.	1	n.d.	-
m,p-Xylene (CAS No.: 108-38-3, 106-42-3)	mg/kg	With reference to US EPA 5021 method. Analysis was performed by GC/MS.	1	n.d.	-
p-Isopropyltoluene (CAS No.: 99-87-6)	mg/kg	With reference to US EPA 5021 method. Analysis was performed by GC/MS.	1	n.d.	-
sec-Butylbenzene (CAS No.: 135-98-8)	mg/kg	With reference to US EPA 5021 method. Analysis was performed by GC/MS.	1	n.d.	-
Styrene (CAS No.: 100-42-5)	mg/kg	With reference to US EPA 5021 method. Analysis was performed by GC/MS.	1	n.d.	-
2,2-tert-Butylbenzene (CAS No.: 98-06-6)	mg/kg	With reference to US EPA 5021 method. Analysis was performed by GC/MS.	1	n.d.	-
Tetrachloroethene (CAS No.: 127-18-4)	mg/kg	With reference to US EPA 5021 method. Analysis was performed by GC/MS.	1	n.d.	-
Toluene (CAS No.: 108-88-3)	mg/kg	With reference to US EPA 5021 method. Analysis was performed by GC/MS.	1	n.d.	-
trans-1,2-Dichloroethene (CAS No.: 156-60-5)	mg/kg	With reference to US EPA 5021 method. Analysis was performed by GC/MS.	1	n.d.	-

Unless otherwise stated the results shown in this test report refer only to the sample(s) tested. This test report cannot be reproduced, except in full, without prior written permission of the Company. 除非另有說明，此報告結果僅對測試之樣品負責。本報告未經本公司書面許可，不可部分複製。
This document is issued by the Company subject to its General Conditions of Service printed overleaf, available on request or accessible at www.sgs.com/terms_and_conditions.htm and, for electronic format documents, subject to Terms and Conditions for Electronic Documents at www.sgs.com/en/Terms-and-Conditions/Terms-e-Document. Attention is drawn to the limitation of liability, indemnification and jurisdiction issues defined therein. Any holder of this document is advised that information contained hereon reflects the Company's findings at the time of its intervention only and within the limits of Client's instructions, if any. The Company's sole responsibility is to its Client and this document does not exonerate parties to a transaction from exercising all their rights and obligations under the transaction documents. This document cannot be reproduced except in full, without prior written approval of the Company. Any unauthorized alteration, forgery or falsification of the content or appearance of this document is unlawful and offenders may be prosecuted to the fullest extent of the law.

Test Report

No. : CE/2012/C1042 Date : 2012/12/14 Page : 6 of 10

COULISSE B.V.
VONDERWEG 48 7468 DC ENTER; NETHERLANDS



Test Item(s)	Unit	Method	MDL	Result	Limit
				No.1	
trans-1,3-Dichloropropene (CAS No.: 10061-02-6)	mg/kg	With reference to US EPA 5021 method. Analysis was performed by GC/MS.	1	n.d.	-
Trichloroethylene (CAS No.: 79-01-6)	mg/kg	With reference to US EPA 5021 method. Analysis was performed by GC/MS.	1	n.d.	-
Trichlorofluoromethane (CAS No.: 75-69-4)	mg/kg	With reference to US EPA 5021 method. Analysis was performed by GC/MS.	1	n.d.	-
Vinyl chloride (CAS No.: 75-01-4)	mg/kg	With reference to US EPA 5021 method. Analysis was performed by GC/MS.	1	n.d.	-

Note :

1. mg/kg = ppm ; 0.1wt% = 1000ppm
2. n.d. = Not Detected
3. MDL = Method Detection Limit
4. " - " = Not Regulated

Unless otherwise stated the results shown in this test report refer only to the sample(s) tested. This test report cannot be reproduced, except in full, without prior written permission of the Company. 除非另有說明，此報告結果僅對測試之樣品負責。本報告未經本公司書面許可，不可部分複製。
This document is issued by the Company subject to its General Conditions of Service printed overleaf, available on request or accessible at www.sgs.com/terms_and_conditions.htm and, for electronic format documents, subject to Terms and Conditions for Electronic Documents at www.sgs.com/en/Terms-and-Conditions/Terms-e-Document. Attention is drawn to the limitation of liability, indemnification and jurisdiction issues defined therein. Any holder of this document is advised that information contained hereon reflects the Company's findings at the time of its intervention only and within the limits of Client's instructions, if any. The Company's sole responsibility is to its Client and this document does not exonerate parties to a transaction from exercising all their rights and obligations under the transaction documents. This document cannot be reproduced except in full, without prior written approval of the Company. Any unauthorized alteration, forgery or falsification of the content or appearance of this document is unlawful and offenders may be prosecuted to the fullest extent of the law.

Test Report

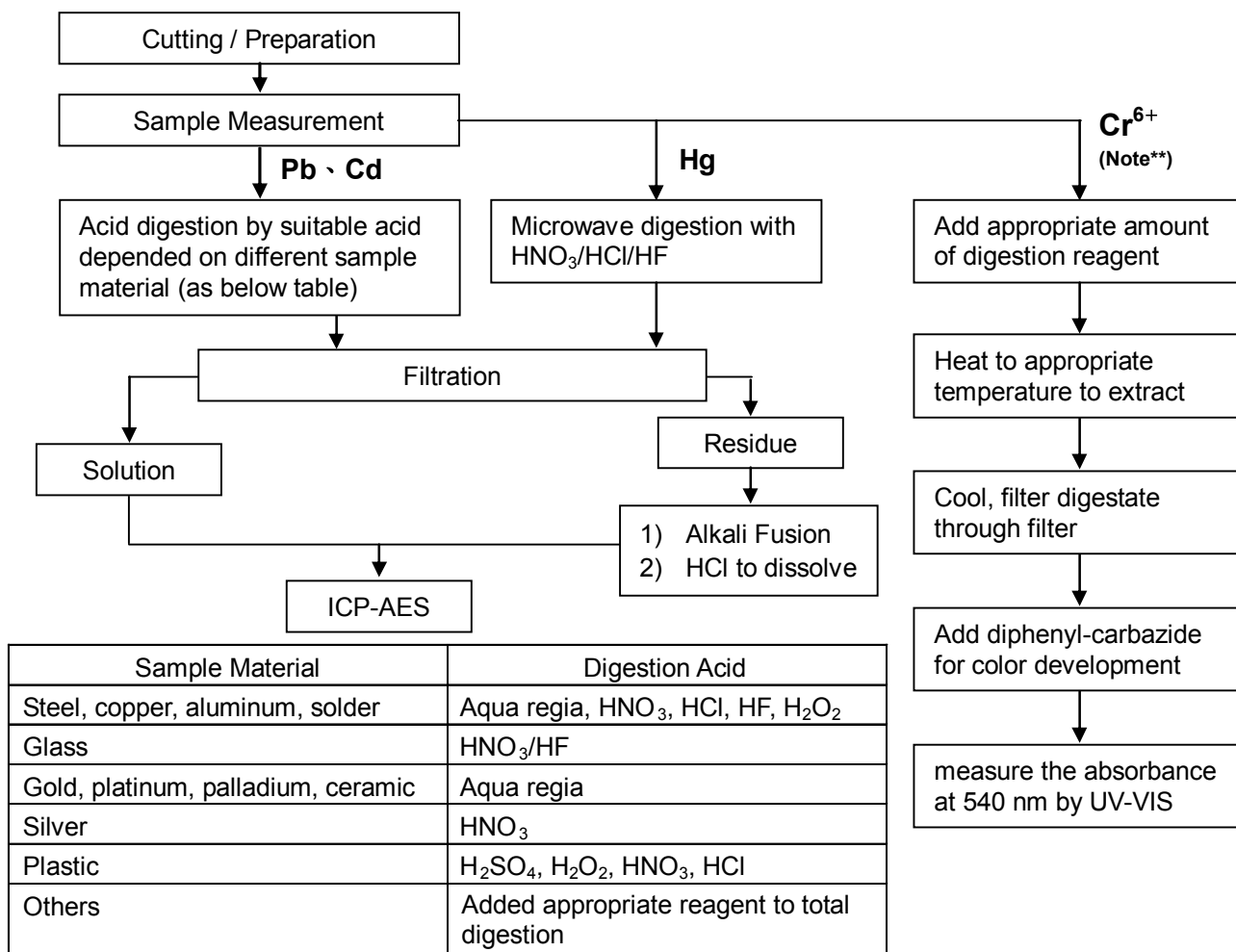
No. : CE/2012/C1042 Date : 2012/12/14 Page : 7 of 10

COULISSE B.V.

VONDERWEG 48 7468 DC ENTER; NETHERLANDS



- 1) These samples were dissolved totally by pre-conditioning method according to below flow chart.
(Cr⁶⁺ test method excluded)
- 2) Name of the person who made measurement: Climbgreat Yang
- 3) Name of the person in charge of measurement: Troy Chang



Note :** (1) For non-metallic material, add alkaline digestion reagent and heat to 90~95 °C.
(2) For metallic material, add pure water and heat to boiling.

Unless otherwise stated the results shown in this test report refer only to the sample(s) tested. This test report cannot be reproduced, except in full, without prior written permission of the Company. 除非另有說明，此報告結果僅對測試之樣品負責。本報告未經本公司書面許可，不可部分複製。
This document is issued by the Company subject to its General Conditions of Service printed overleaf, available on request or accessible at www.sgs.com/terms_and_conditions.htm and, for electronic format documents, subject to Terms and Conditions for Electronic Documents at www.sgs.com/en/Terms-and-Conditions/Terms-e-Document. Attention is drawn to the limitation of liability, indemnification and jurisdiction issues defined therein. Any holder of this document is advised that information contained hereon reflects the Company's findings at the time of its intervention only and within the limits of Client's instructions, if any. The Company's sole responsibility is to its Client and this document does not exonerate parties to a transaction from exercising all their rights and obligations under the transaction documents. This document cannot be reproduced except in full, without prior written approval of the Company. Any unauthorized alteration, forgery or falsification of the content or appearance of this document is unlawful and offenders may be prosecuted to the fullest extent of the law.

Test Report

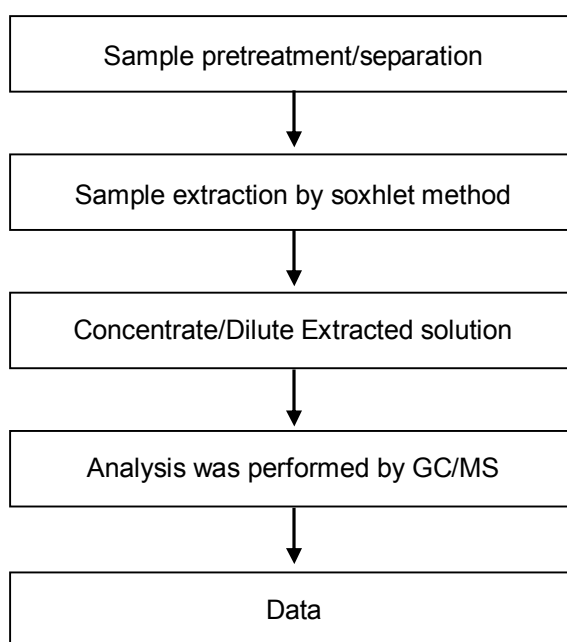
No. : CE/2012/C1042 Date : 2012/12/14 Page : 8 of 10

COULISSE B.V.
VONDERWEG 48 7468 DC ENTER; NETHERLANDS



Analytical flow chart of phthalate content

- Name of the person who made measurement: Roman Wong
- Name of the person in charge of measurement: Troy Chang



Unless otherwise stated the results shown in this test report refer only to the sample(s) tested. This test report cannot be reproduced, except in full, without prior written permission of the Company. 除非另有說明，此報告結果僅對測試之樣品負責。本報告未經本公司書面許可，不可部分複製。
This document is issued by the Company subject to its General Conditions of Service printed overleaf, available on request or accessible at www.sgs.com/terms_and_conditions.htm and, for electronic format documents, subject to Terms and Conditions for Electronic Documents at www.sgs.com/en/Terms-and-Conditions/Terms-e-Document. Attention is drawn to the limitation of liability, indemnification and jurisdiction issues defined therein. Any holder of this document is advised that information contained hereon reflects the Company's findings at the time of its intervention only and within the limits of Client's instructions, if any. The Company's sole responsibility is to its Client and this document does not exonerate parties to a transaction from exercising all their rights and obligations under the transaction documents. This document cannot be reproduced except in full, without prior written approval of the Company. Any unauthorized alteration, forgery or falsification of the content or appearance of this document is unlawful and offenders may be prosecuted to the fullest extent of the law.

Test Report

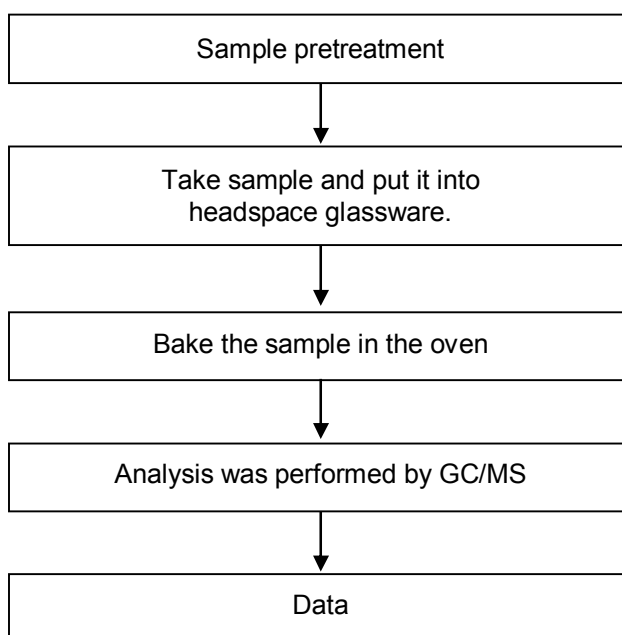
No. : CE/2012/C1042 Date : 2012/12/14 Page : 9 of 10

COULISSE B.V.
VONDERWEG 48 7468 DC ENTER; NETHERLANDS



Analytical flow chart of volatile organic compounds (VOCs)

- Name of the person who made measurement : Chun Wu
 - Name of the person in charge of measurement : Shinjyh Chen
- 【Reference method : US EPA 5021】



Unless otherwise stated the results shown in this test report refer only to the sample(s) tested. This test report cannot be reproduced, except in full, without prior written permission of the Company. 除非另有說明，此報告結果僅對測試之樣品負責。本報告未經本公司書面許可，不可部分複製。
This document is issued by the Company subject to its General Conditions of Service printed overleaf, available on request or accessible at www.sgs.com/terms_and_conditions.htm and, for electronic format documents, subject to Terms and Conditions for Electronic Documents at www.sgs.com/en/Terms-and-Conditions/Terms-e-Document. Attention is drawn to the limitation of liability, indemnification and jurisdiction issues defined therein. Any holder of this document is advised that information contained hereon reflects the Company's findings at the time of its intervention only and within the limits of Client's instructions, if any. The Company's sole responsibility is to its Client and this document does not exonerate parties to a transaction from exercising all their rights and obligations under the transaction documents. This document cannot be reproduced except in full, without prior written approval of the Company. Any unauthorized alteration, forgery or falsification of the content or appearance of this document is unlawful and offenders may be prosecuted to the fullest extent of the law.

Test Report

No. : CE/2012/C1042 Date : 2012/12/14 Page : 10 of 10

COULISSE B.V.
VONDERWEG 48 7468 DC ENTER; NETHERLANDS



* The tested sample / part is marked by an arrow if it's shown on the photo. *

CE/2012/C1042



** End of Report **

Unless otherwise stated the results shown in this test report refer only to the sample(s) tested. This test report cannot be reproduced, except in full, without prior written permission of the Company. 除非另有說明，此報告結果僅對測試之樣品負責。本報告未經本公司書面許可，不可部分複製。
This document is issued by the Company subject to its General Conditions of Service printed overleaf, available on request or accessible at www.sgs.com/terms_and_conditions.htm and, for electronic format documents, subject to Terms and Conditions for Electronic Documents at www.sgs.com/en/Terms-and-Conditions/Terms-e-Document. Attention is drawn to the limitation of liability, indemnification and jurisdiction issues defined therein. Any holder of this document is advised that information contained hereon reflects the Company's findings at the time of its intervention only and within the limits of Client's instructions, if any. The Company's sole responsibility is to its Client and this document does not exonerate parties to a transaction from exercising all their rights and obligations under the transaction documents. This document cannot be reproduced except in full, without prior written approval of the Company. Any unauthorized alteration, forgery or falsification of the content or appearance of this document is unlawful and offenders may be prosecuted to the fullest extent of the law.